



# HEALTHY YORK NETWORK

QUARTERLY REPORT

JANUARY 8, 2007

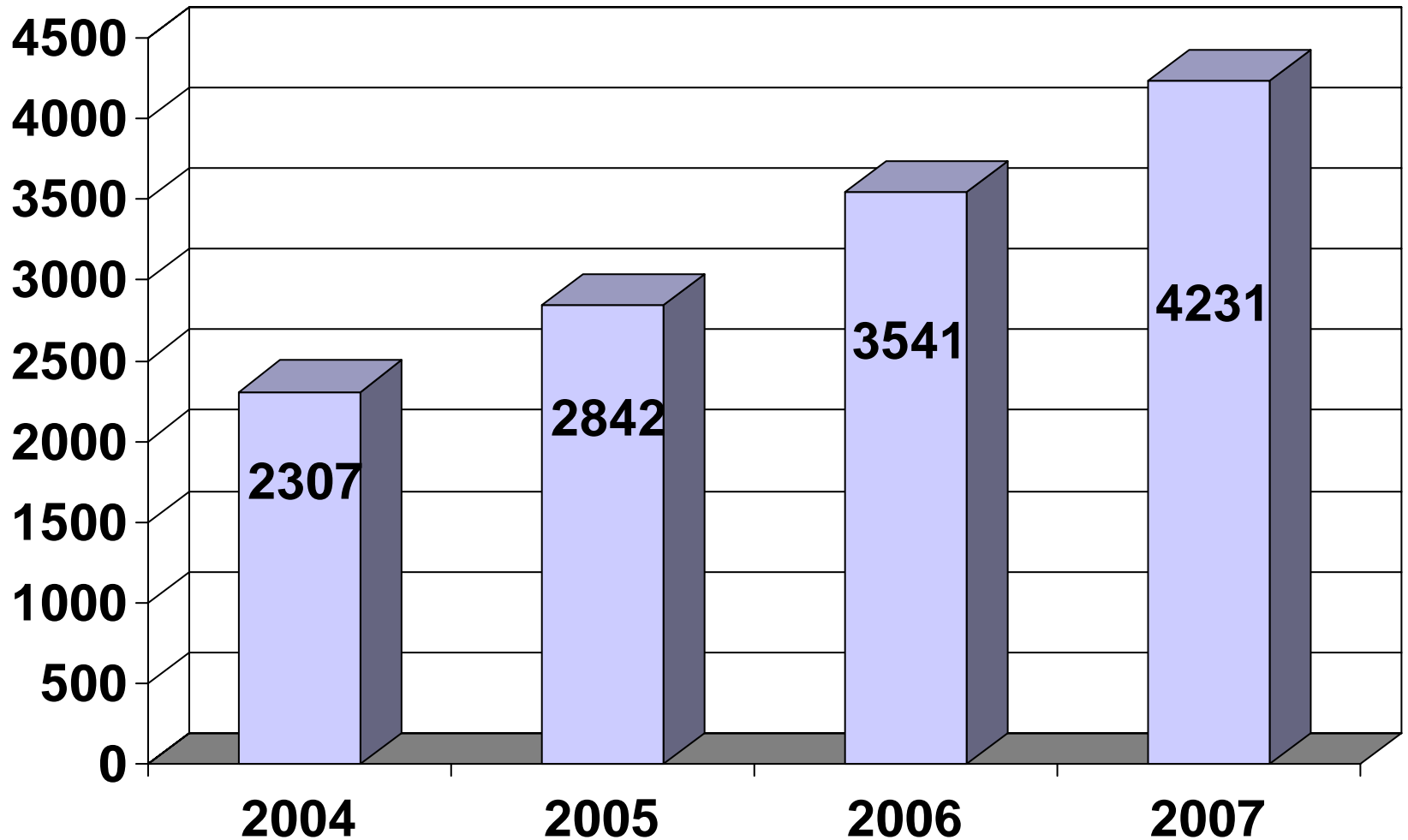
# ENROLLMENT



- Goal – 4000 Enrolled
  - Total as of 1/1/08 – 4724
    - 4% increase from previous quarter
  - Total applicants finalized for quarter – 2298
  - Total applicants approved for quarter – 2176
    - 95% approval rate
  - 24% of those currently enrolled in HYN have some form of insurance
    - This is up from 22% in previous quarter

# ENROLLMENT (CON'T)

Average # Members Per Month



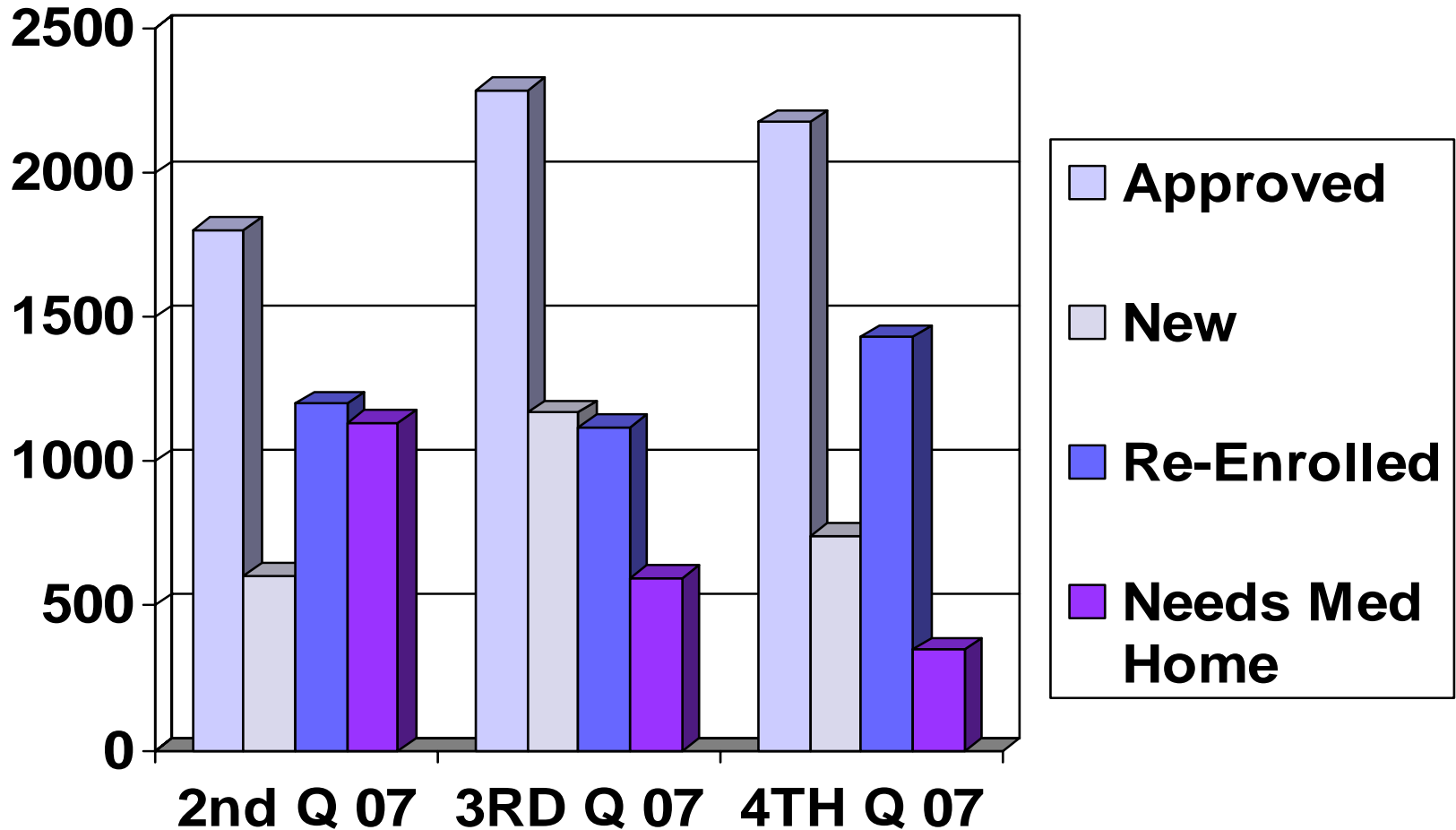
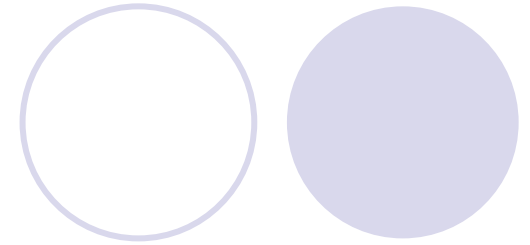
# ENROLLMENT (CON'T)



- Out of the 1140 members who have some form of insurance, the breakdown is:
  - Medicare – 69%
  - Employer – 15%
  - Medical Assistance & MA HMO – 7%
  - Unison aB (Adult Basic) – 5%
  - Other/Misc. – 4%

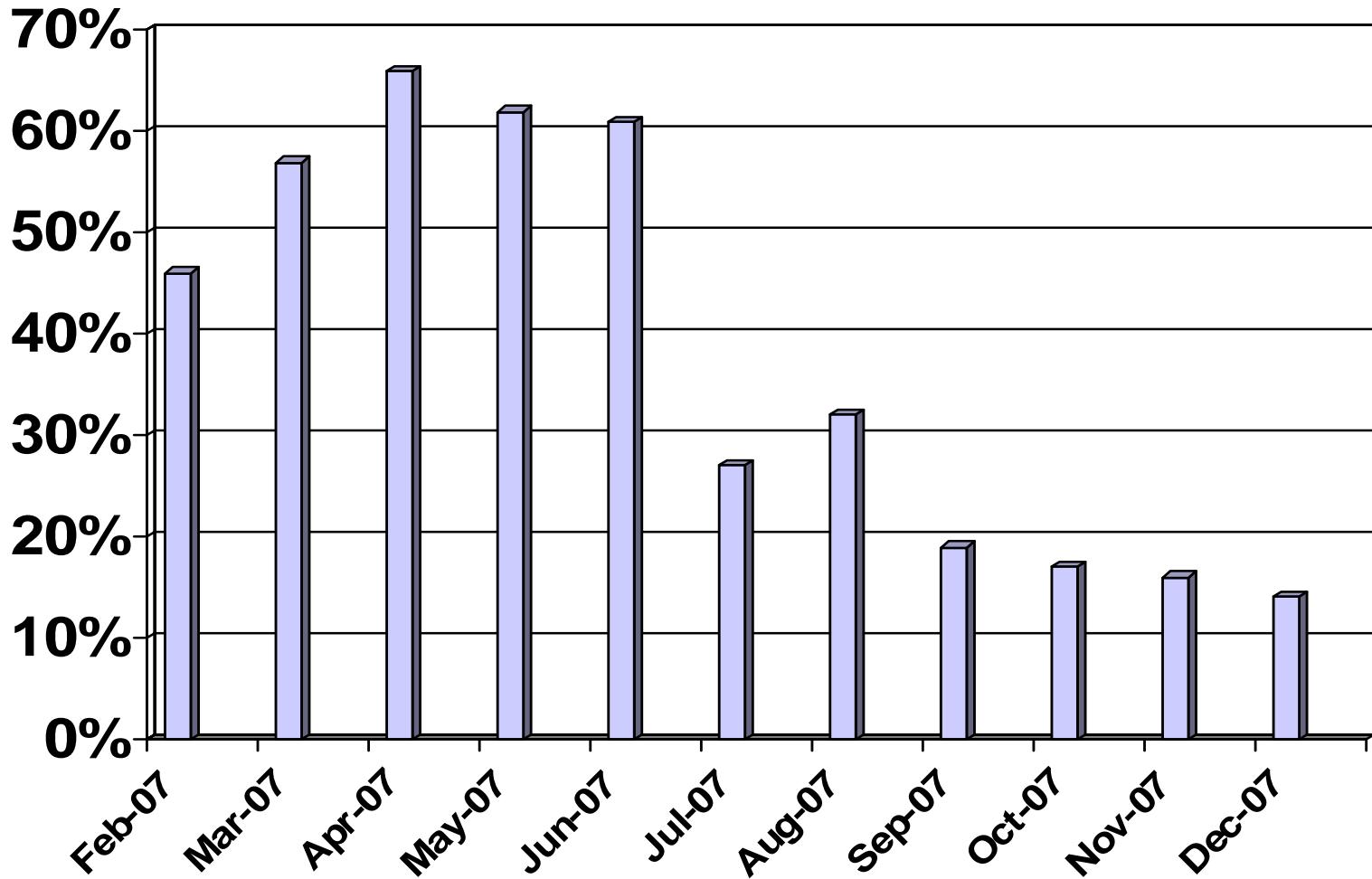
# ENROLLMENT (CON'T)

(Assignment To a Medical Home Analysis)



# ENROLLMENT (CON'T)

(% Assigned to Medical Home)



# APPLICANT STATUS BY INTAKE ORGANIZATION

(Since the inception of the Web Application 2/05)

	CPC	CPC HAN	FFH	FHAN	HH	HEALTH CONNECT	HOOD.	MH	OTHER	PRIV PHYS	WS G'BURG	WS YORK	YCBOH	YSAC	TOTAL
Approved	187	1	1432	561	7	104	23	750	47	5	1273	14,231	363	509	19,493
Abandoned	55	1	27	6	2	2	1	47	5		57	843	77	97	1220
Central Review												2			2
Denied	5		32	1				15	2		32	420	13	7	527
Edit	1			1	1	2					1	45			51
Pending			1					1				45			47
Returned												1			1
Total as of 1/3/08	248	2	1492	569	10	108	24	813	54	5	1363	15,587	453	613	21341
Total as of 1/12/07	230	0	916	0	0	51	13	589	39	5	1034	9292	439	476	13,084
Total as of 1/10/06	90	0	371	0	0	0	2	259	37	3	356	4197	203	269	5787

# PUBLIC & PRIVATE INSURANCE

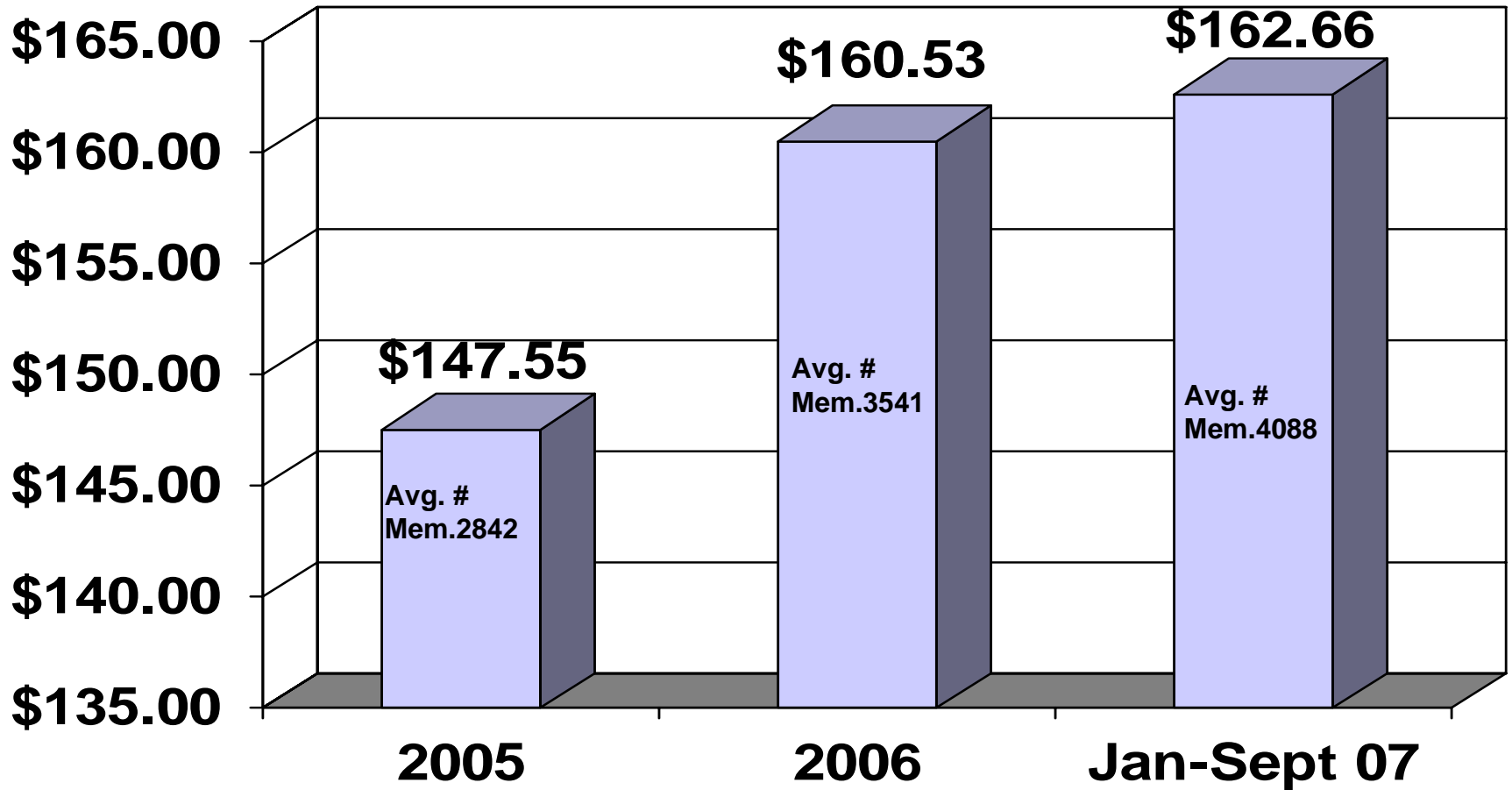
## MEDICAID ENROLLMENT SUMMARY

(\$ Based on Average paid by Medicaid per year per Adult - \$2,630)

	<b>TOTAL</b>	<b>APPROV.</b>	<b>% APPROVED</b>	<b>\$</b>	<b>ANNUALIZED</b>
<b>4/04-3/05</b>	<b>334</b>	<b>144</b>	<b>35%</b>	<b>\$378,720</b>	<b>\$378,720</b>
<b>4/05-3/06</b>	<b>612</b>	<b>353</b>	<b>58%</b>	<b>\$928,390</b>	<b>\$928,390</b>
<b>4/06-3/07</b>	<b>531</b>	<b>287</b>	<b>54%</b>	<b>\$754,810</b>	<b>\$754,810</b>
<b>4/07-11/07</b>	<b>547</b>	<b>181</b>	<b>33%</b>	<b>\$476,030</b>	<b>\$714,045</b>

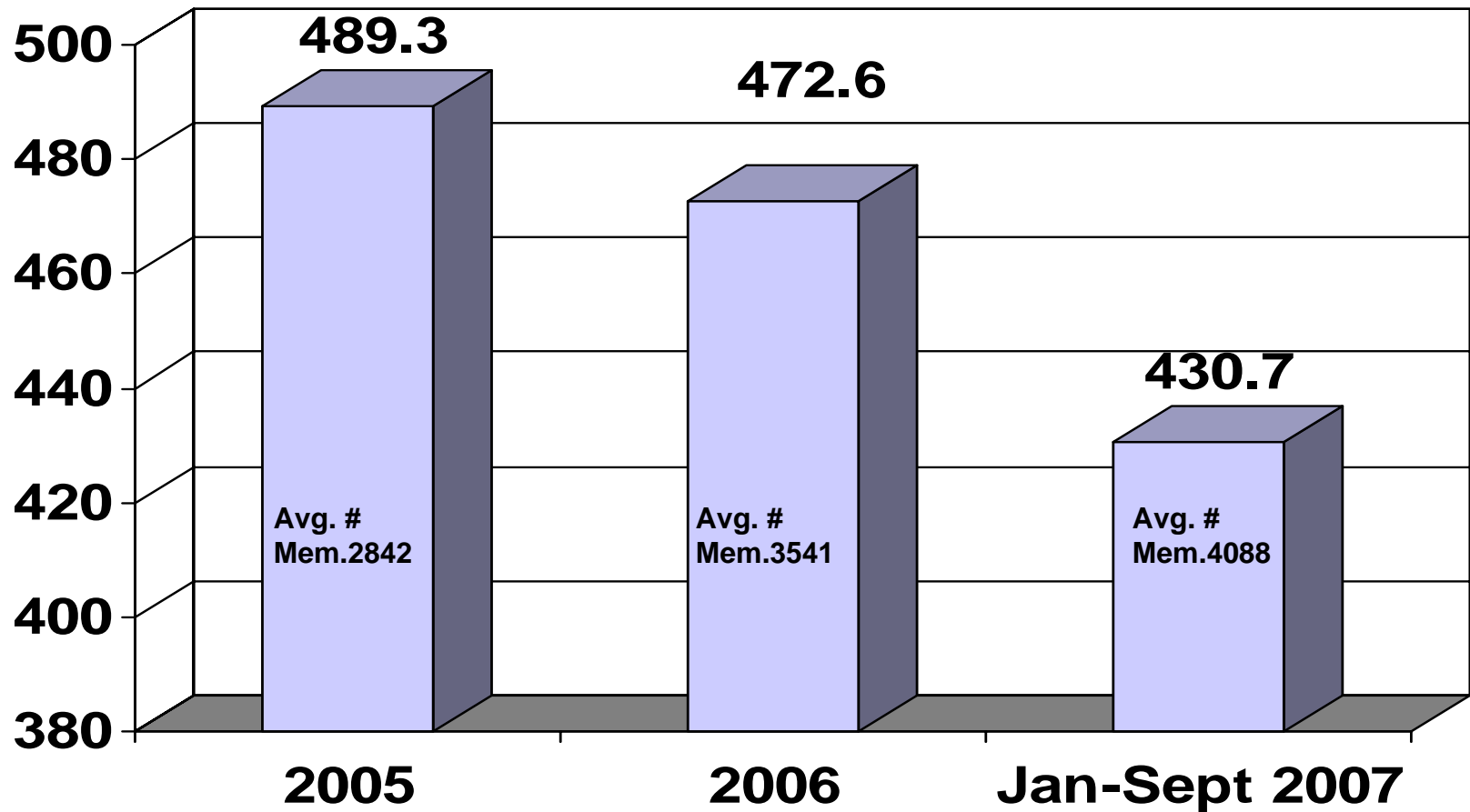
# ANCILLARY SERVICES

(Average \$ of Ancillary Services Per Member Per Month adjusted for rate increases)



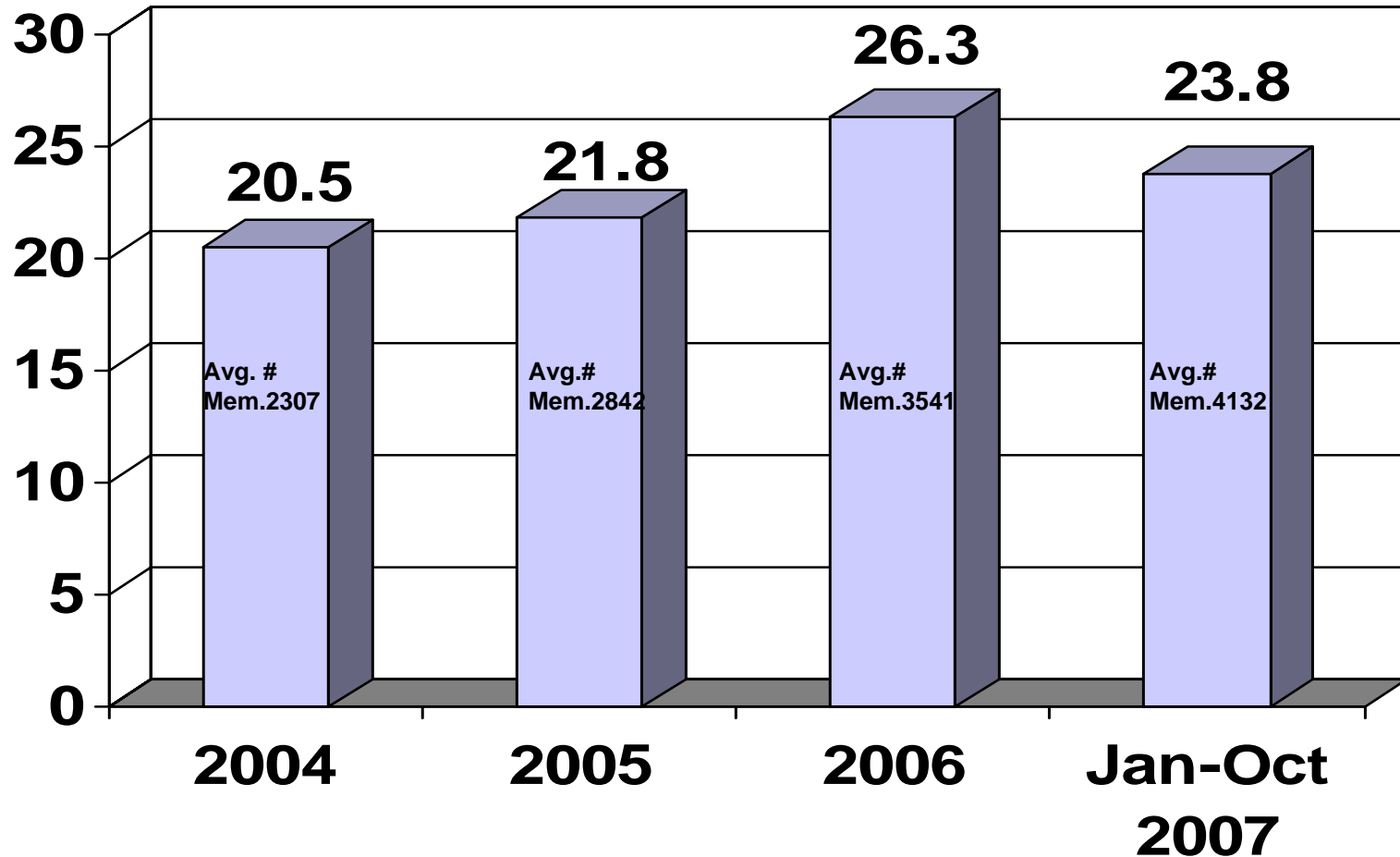
# ANCILLARY SERVICES

(Average # Ancillary Services Per 1,000 Members Per Month)



# INPATIENT ADMISSIONS

(Average # Admissions Per Thousand Members Per Month)



# INPATIENT - LENGTH OF STAY

(Average Length of Inpatient Stay)

