

**CCN Poly-Pharmacy  
Member Case  
Management Program**

# Overview of 340B Program

- Resulted from the Veterans Health Care Act of 1992
- Codified as Section 340B of the Public Health Service Act
- Only “Covered Entities” Can Participate
- Covered Entities Include:
  - Certain Disproportionate Share Hospitals (DSHs)
  - Federally Qualified Health Centers (FQHCs)
  - AIDS Drug Assistance Programs (ADAPs)
  - Others See
    - [www.bphc.hrsa.gov/opa/](http://www.bphc.hrsa.gov/opa/)
    - [www.phpcrx.org](http://www.phpcrx.org)



# Overview of 340B Program (Cont.)

- Administered by the Office of Pharmacy Affairs (OPA)
- No Billing Restrictions (Except MA FFS)
- Does Not Prohibit MA MCO Drug Rebates
- Prices Average 52% Below AWP
- Covered Entities Can Use “Contracted 340B Pharmacies”
- Can Be Used for Any Patient of a Covered Entity
- Covered Entity Must be Enrolled and on OPA Web Site



# Definition of a Patient

- The Covered Entity must establish a relationship with the individual, such that the Covered Entity maintains the records of the individual's health care; and
- The individual must receive health care services from a health care professional who is either employed by the Covered Entity or provides health care under a contract with the Covered Entity such that responsibility for the care provided remains with the Covered Entity; and



# Definition of a Patient (Cont.)

- The individual must receive a health care service or range of services from the Covered Entity which is consistent with the service(s) for which grant funding has been provided to the entity. DSHs are exempt from this requirement.
- An individual will not be considered a “patient” of the entity for purposes of 340B if the only health care service received is the dispensing of a drug.

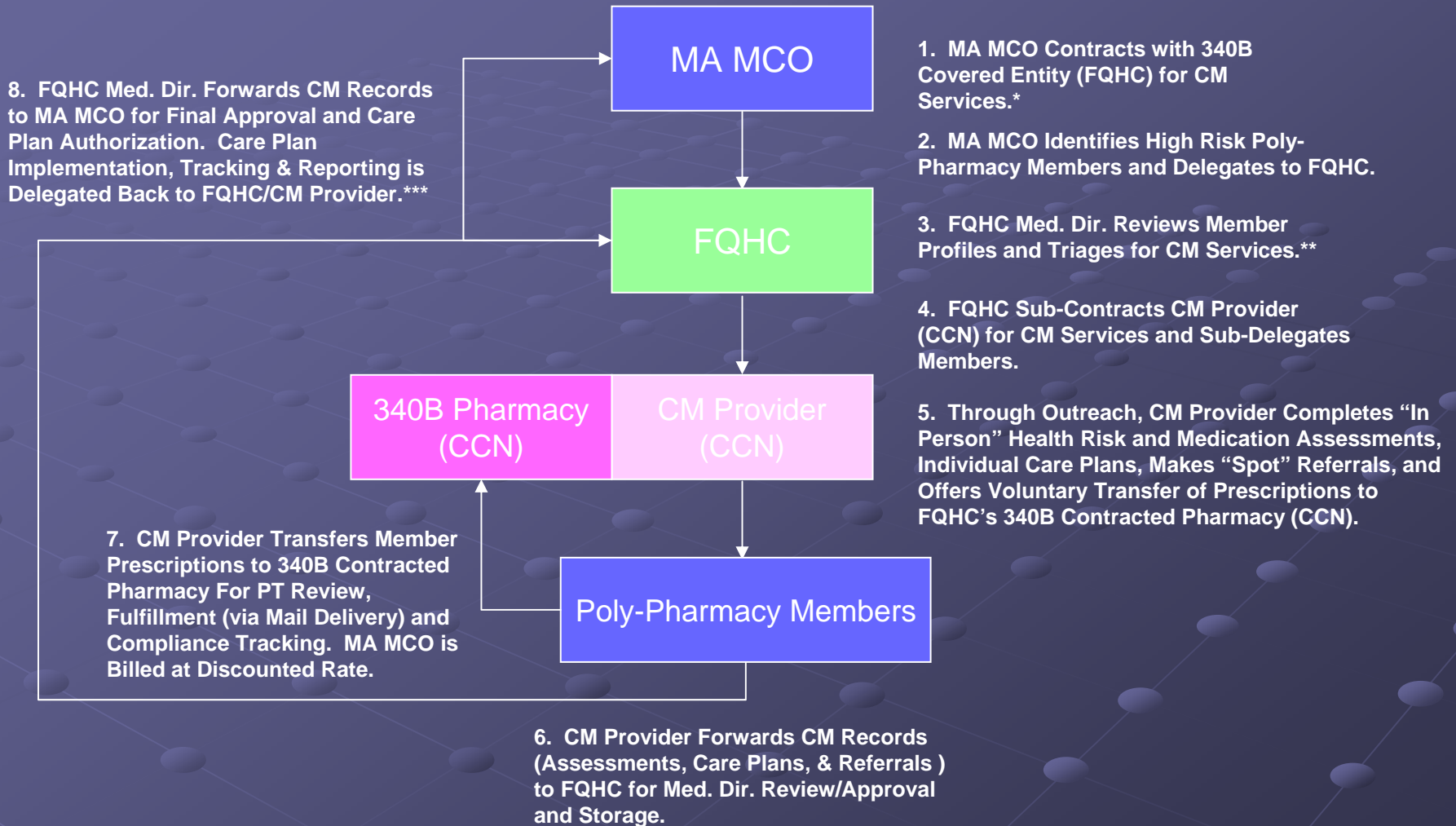


# Overview of Coordinated Care Network (CCN)

- Case Management & 340B Pharmacy Provider
- Funded by U.S. Department of Health and Human Services (CAP Grantee) to Build Central Pharmacy and Mail Order Facility
- Offers 340B Poly-Pharmacy, Physician Dispensing & HIV/Specialty Pharmacy Management Services
- Currently Contracted with 48 Covered Entities



# CCN Poly-Pharmacy Member Case Management Model



\* Limited to Poly-Pharmacy Members and Complimentary to MA MCO Internal CM Services

\*\* PCPs Receive Alerts for High Concern Members

\*\*\* Care Plans May Be Authorized In Full or In Part

# Key Benefits

- Members Receive Ongoing CM Services
- Members Receive Referrals for Food, Clothing, X-Port, etc.
- Members Receive Free Rx Delivery
- Members Receive Refill Compliance Calls
- Plan Obtains Cost Savings
- High Risk Members Receive CM Services and Drug Profile Reviews
- Unnecessary Rx Utilization is Reduced or Eliminated



# Key Success Factors

- CCN Developed Model with 340B Expert Counsel
- CCN Counsel Reviewed Model with Office of Pharmacy Affairs
- Health Plan Reviewed Model with PADPW
- Anticipated Internal CM Issues
- Keep Members Enrolled for 12 Months for Maximum Benefit
- Monitor Non-Delegated Member Enrollment
- Include Factor for Member Out-Migration
- Anticipate Annual Re-Enrollment Costs

