

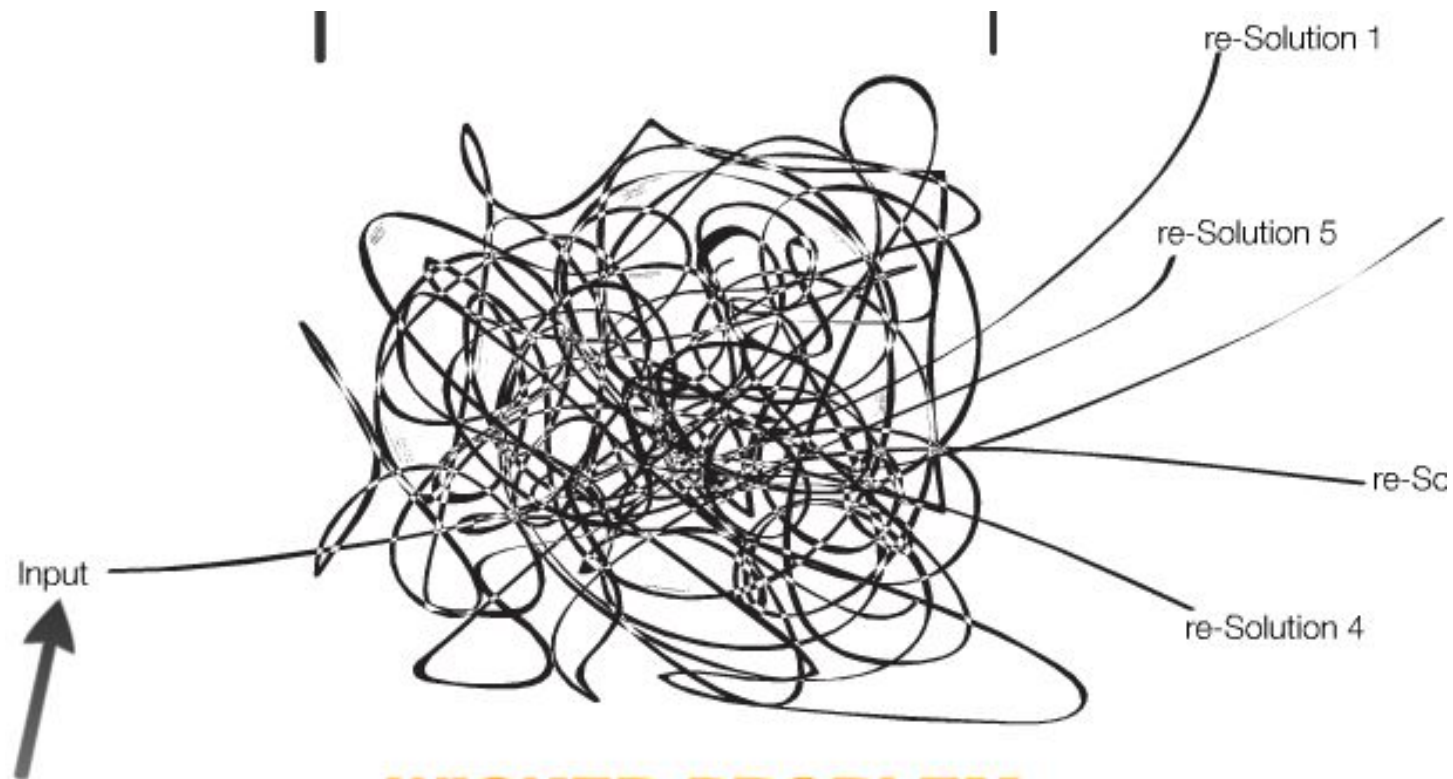


COMMUNITY FOOD
STRATEGIES



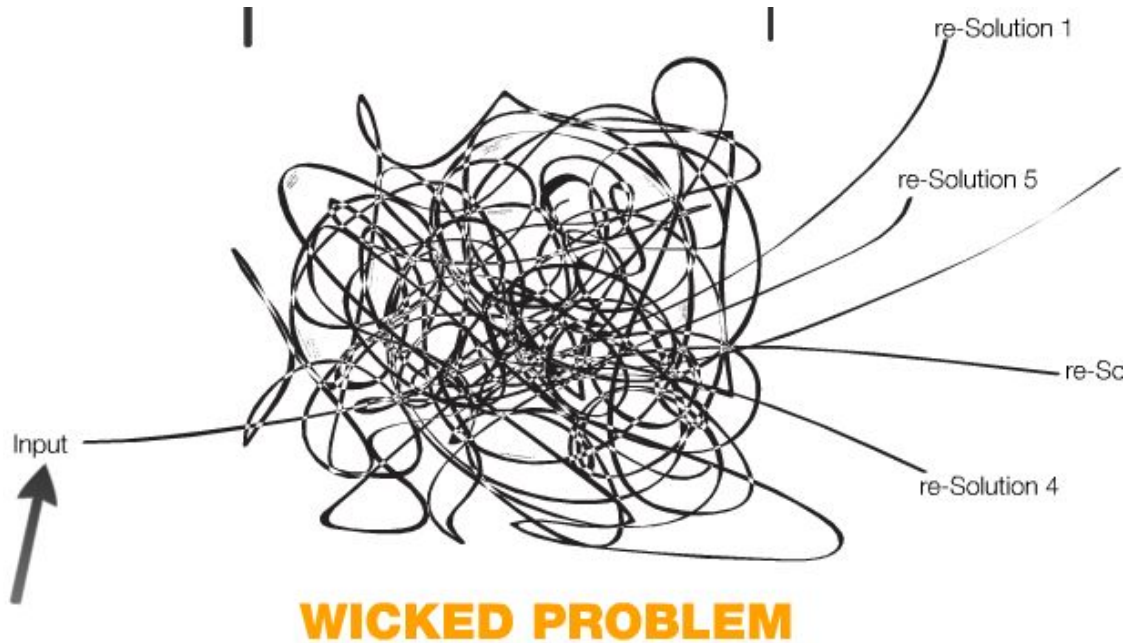
Making Multi-Sectoral Teams Work: Policies, Procedures, and Tools for Success

Communities Joined in Action Conference
February 15, 2018



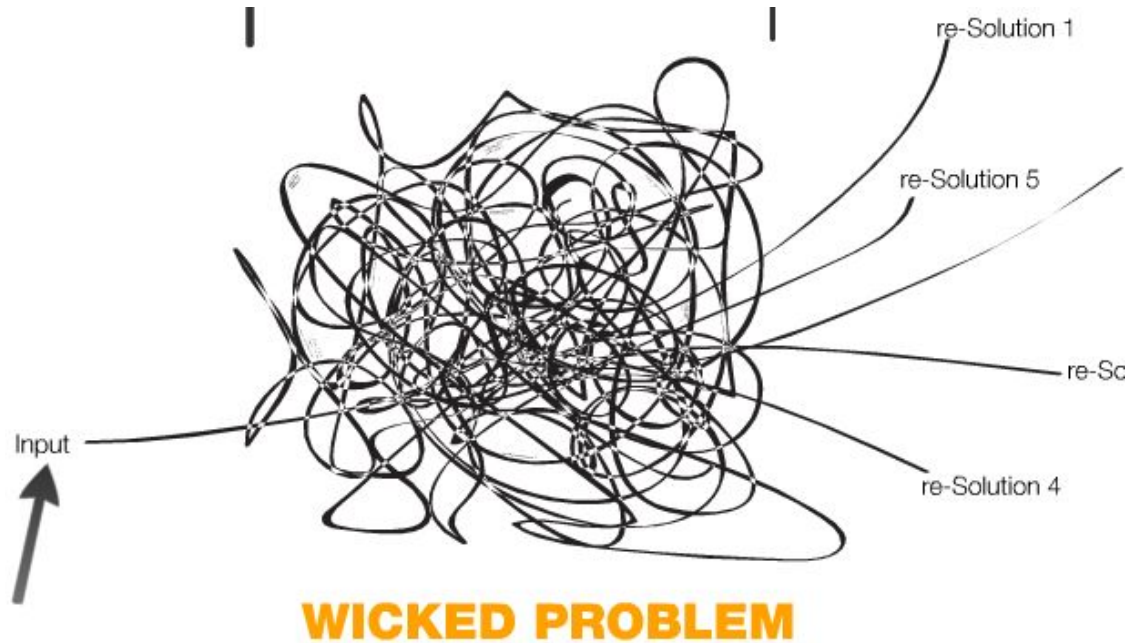
WICKED PROBLEM

Characteristics



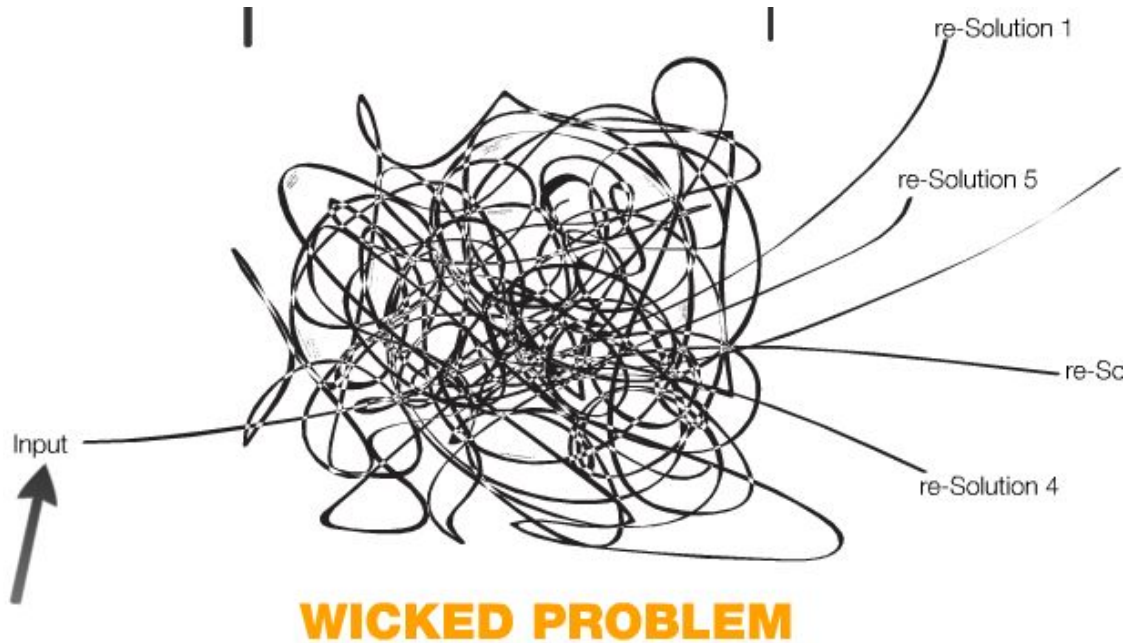
1. Unclear problem definition, not finite

Characteristics



1. Unclear problem definition, not finite
2. Requires innovative learning that includes multiple agencies

Characteristics



1. Unclear problem definition, not finite
2. Requires innovation and learning that includes multiple agencies
3. Adaptive leadership and willingness to experiment



Food councils are cross-sector coalitions that provide perspective on the whole community food system.



We See The Forest . . .

And The Trees.

Food councils convene these many sectors, perform research, educate, and recommend policies to improve their food system.



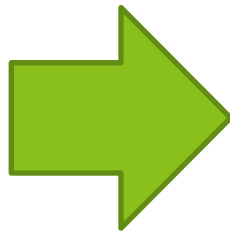
Who's involved in a food council?

Production > Processing > Distribution > Consumption > Waste

- Local government officials
- Planning departments
- Food pantry staff
- Soil and Water District staff
- Teachers
- Faith leaders
- University staff and researchers
- Cooperative Extension
- Restaurant owners
- Farmers
- Public health professionals
- Economic developers
- Non-profit organizations

Charlotte Mecklenburg Food Policy Council

Formed to create a more equitable, sustainable, healthy food system



Reality - Families have to choose:



OR



- 35% of Mecklenberg County families with kids face food insecurity

Fresh Look at School Food event

- County Health Department
- School cafeteria staff
- Students
- Chefs
- Cooperative Extension
- Non-profits, like MomsRising
- University



Start with low-hanging fruit

- Started cooking classes in schools with gardens





Accomplishments since 2010

Key Partners

Mobile farmers market legislation passed

Local gov't

Food pantries opened on college campuses

Colleges, food pantries

3+ yrs of FoodCorps members serving in high-poverty schools

Public schools,
Cooperative Extension

Formation of Fresh Look at School Food coalition

Health dept, kitchen staff,
nutritionists, nonprofits

GAP certified greens at Garbinger High School

NC Dept. of Ag, CFSA,
Cooperative Extension

Candidate Forums, education, and relationships with state and federal representatives

Congresswoman Adams,
Senator Jackson



Connecting w/policy makers

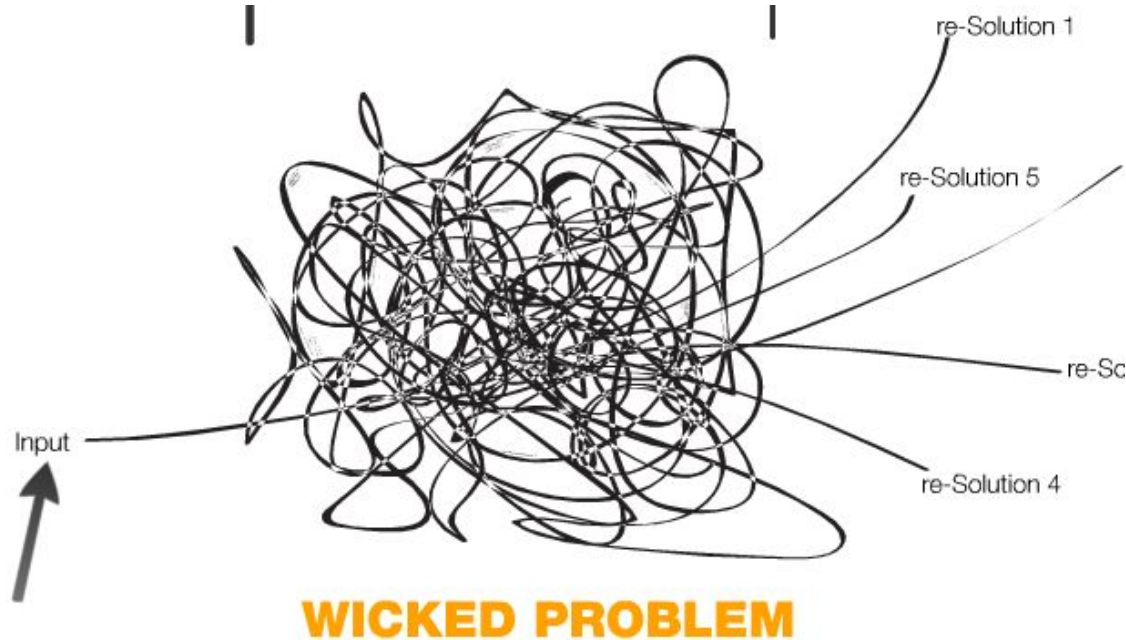


Above: Congresswoman Alma Adams
at 2016 Candidate Forum

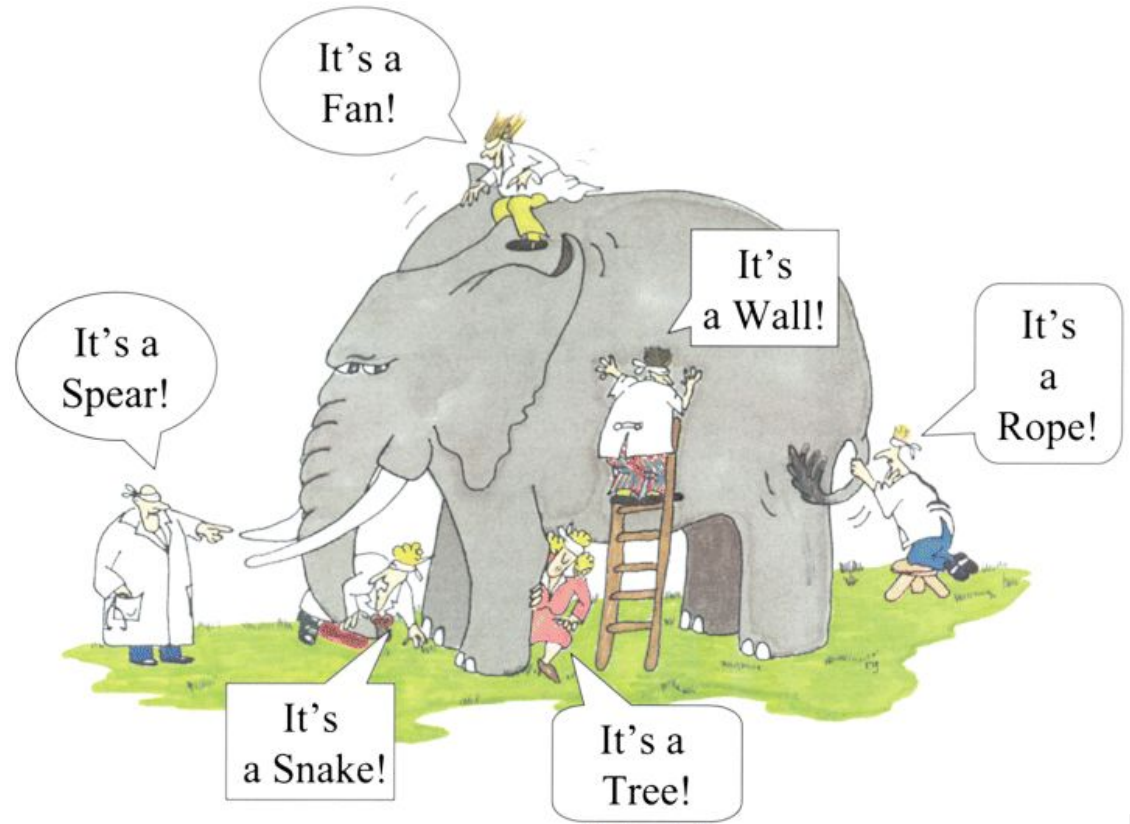


Left: Mayor elect Vi Lyles &
Councilwoman LaWana Mayfield

Health care and food systems are examples of a:



Blind men and the elephant

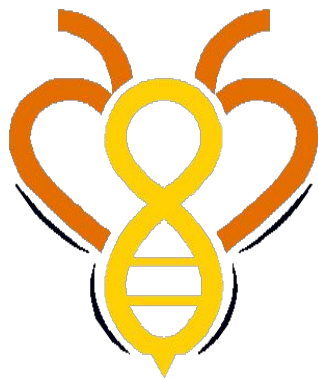


By John Godfrey Saxe (1816–1887)

Networks as a tool



- **multiple agencies**
- **innovation** and learning,
- **adaptive leadership:**
- **multi-stakeholder**
environments and
- **experiment**



COMMUNITY FOOD **STRATEGIES**

*We work to empower local food councils and networks
to create community-led collaboration and
equitable policy change at the local, state, and national level.*



Vision

*We envision an equitable food system
that is community driven and
improves the quality of life for all.*



What we do:

- Build alliances
- Provide tools and trainings
- Offer statewide structure to the network



Multi-organizational initiative

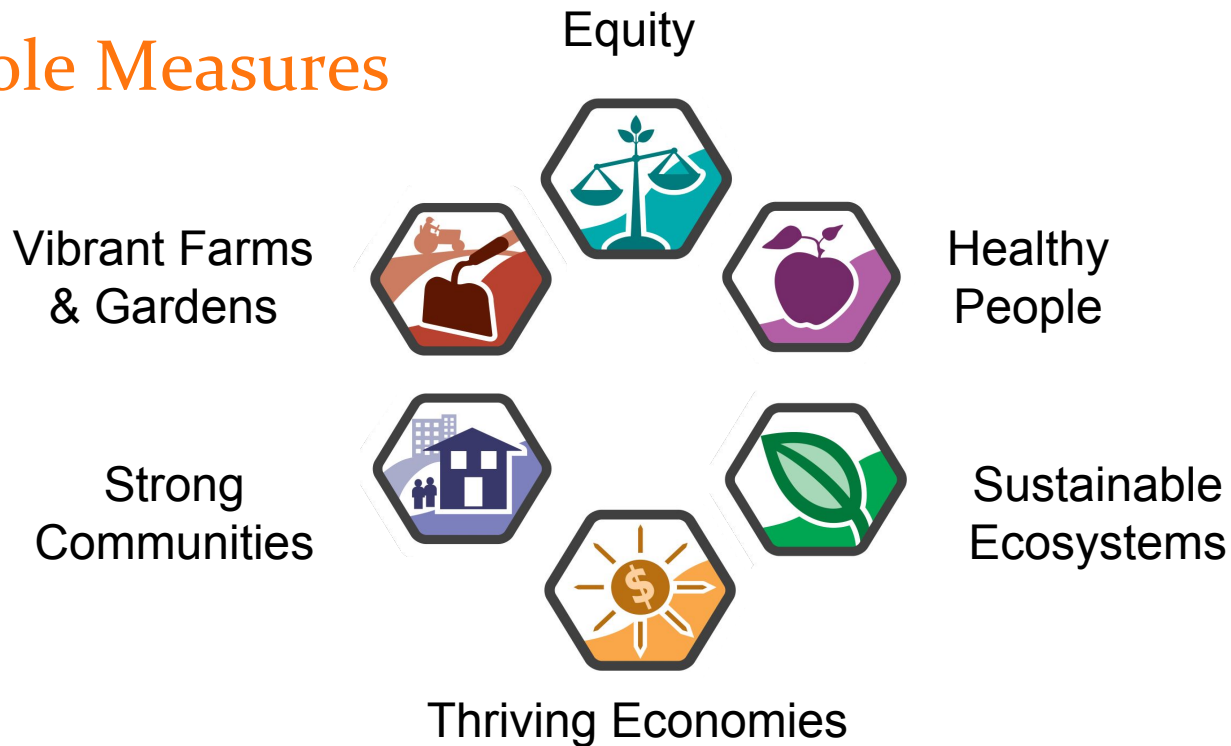




Guiding Principles or Frameworks

- Whole Measures of a Community-based Food System
- Circle Forward
- Collective Impact
- Network Weaving
- Racial Equity

Whole Measures



Whole Measures of a Community-based Food System

Multi-organizational



Equity

X

X

X



Healthy People

X



Resilient Ecosystems

X

X



Thriving Economies

X

X



Strong Community &
Supportive Policy

X

X



Vibrant Farms & Gardens

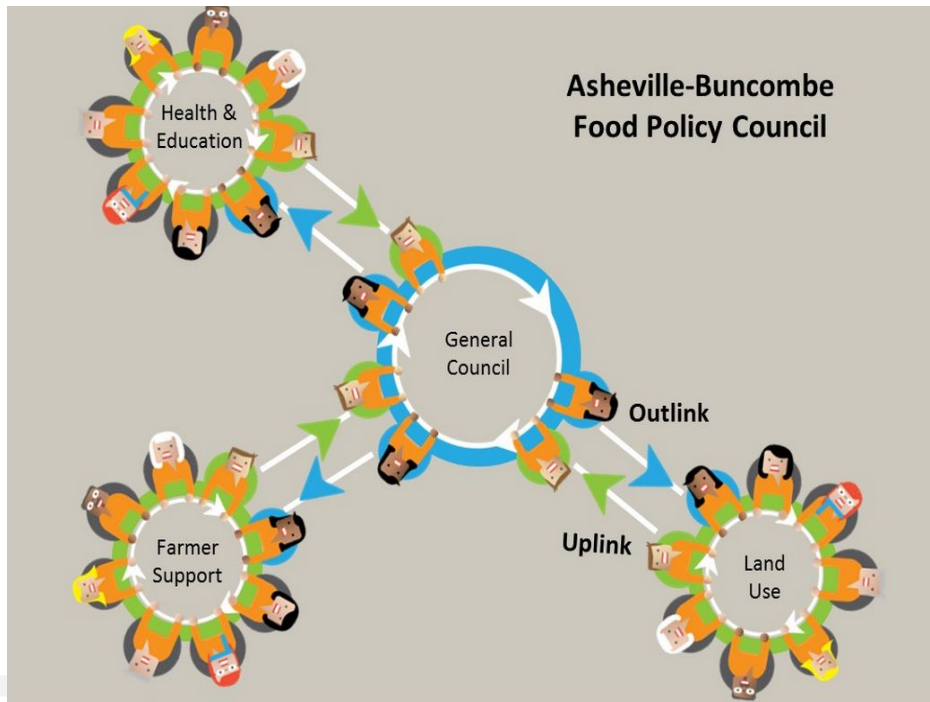
X

X

X



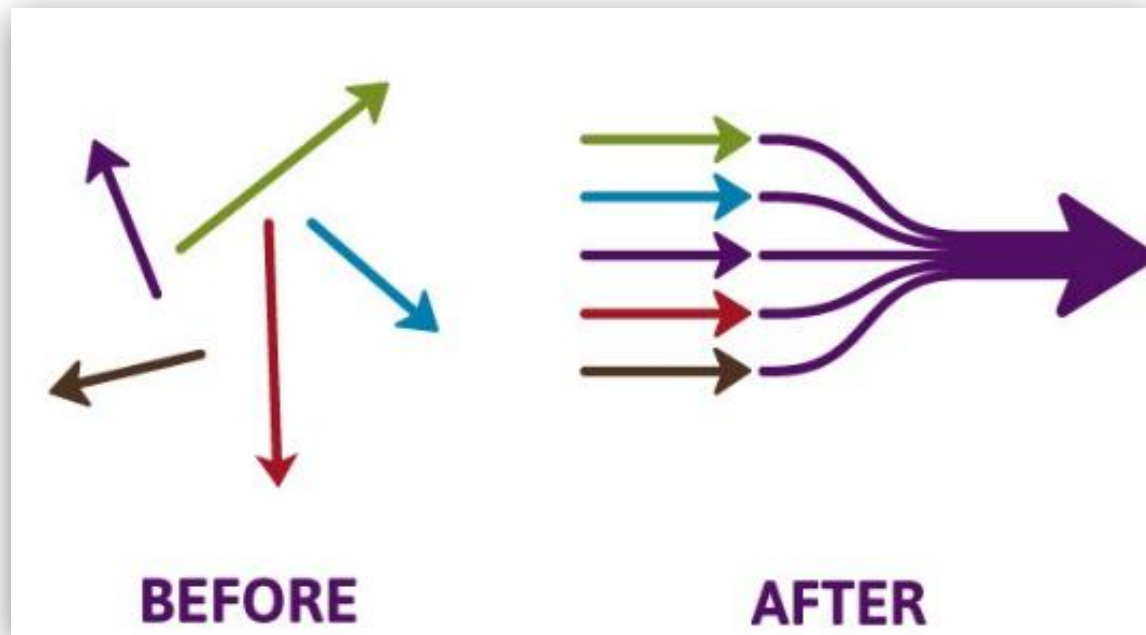
CIRCLE *FORWARD*



#collaborativegovernance

www.circleforward.us

Collective Impact



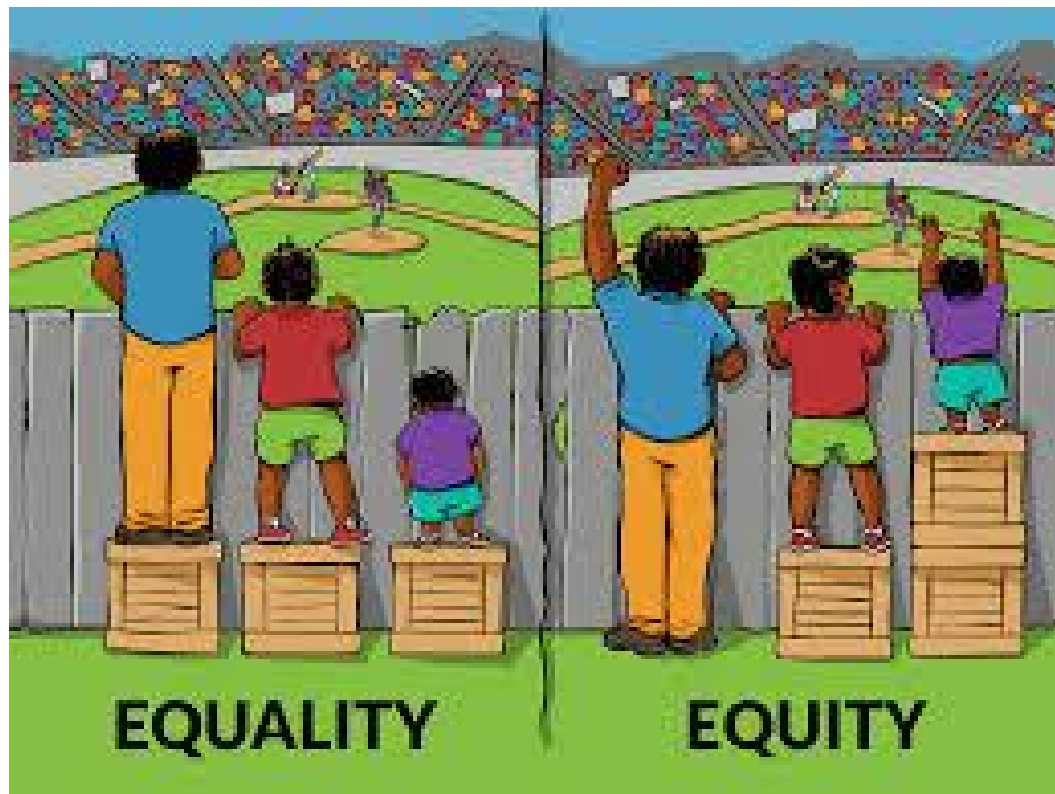
Network Weaving



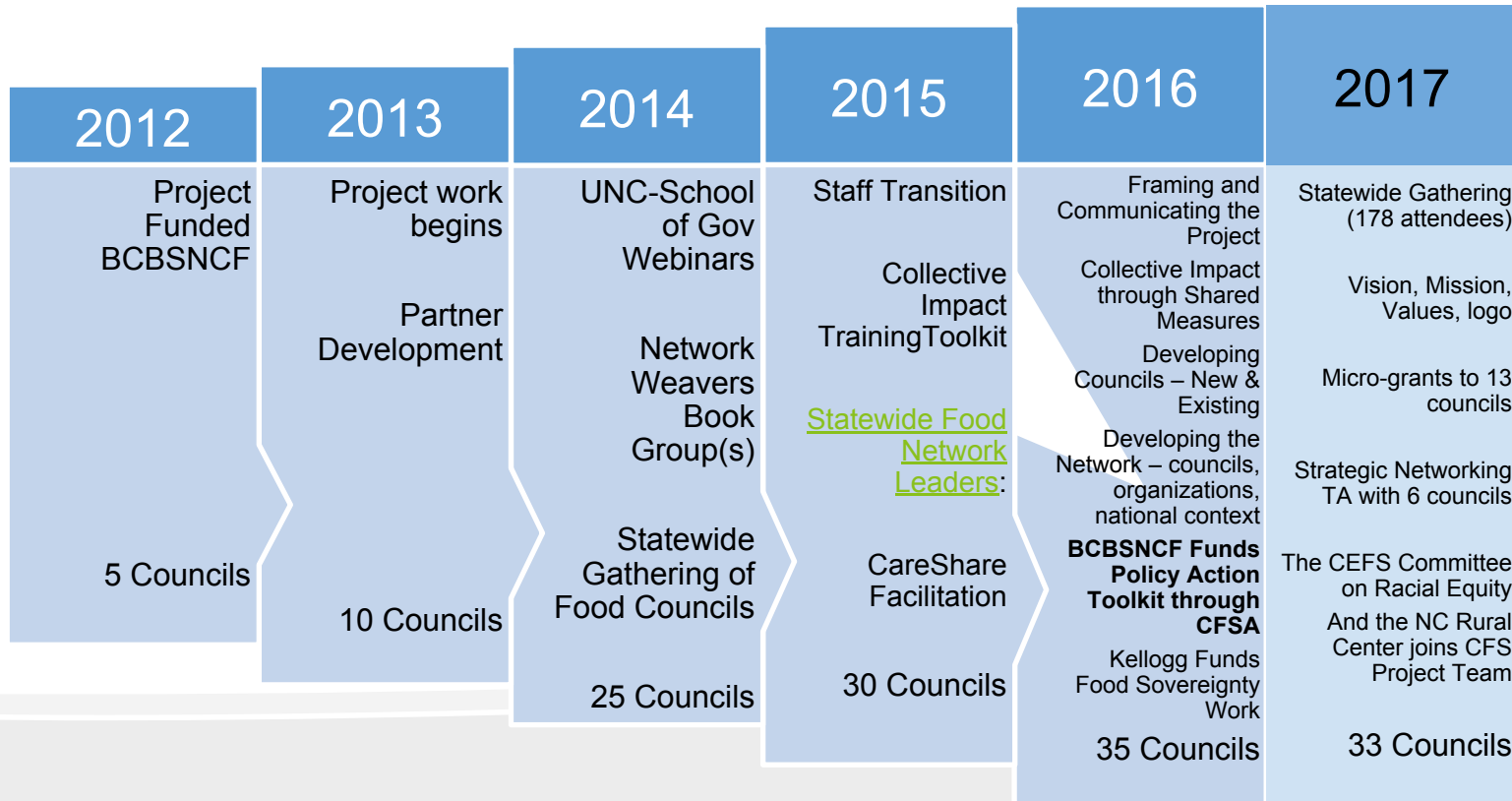
www.networkweaver.com

Racial Equity

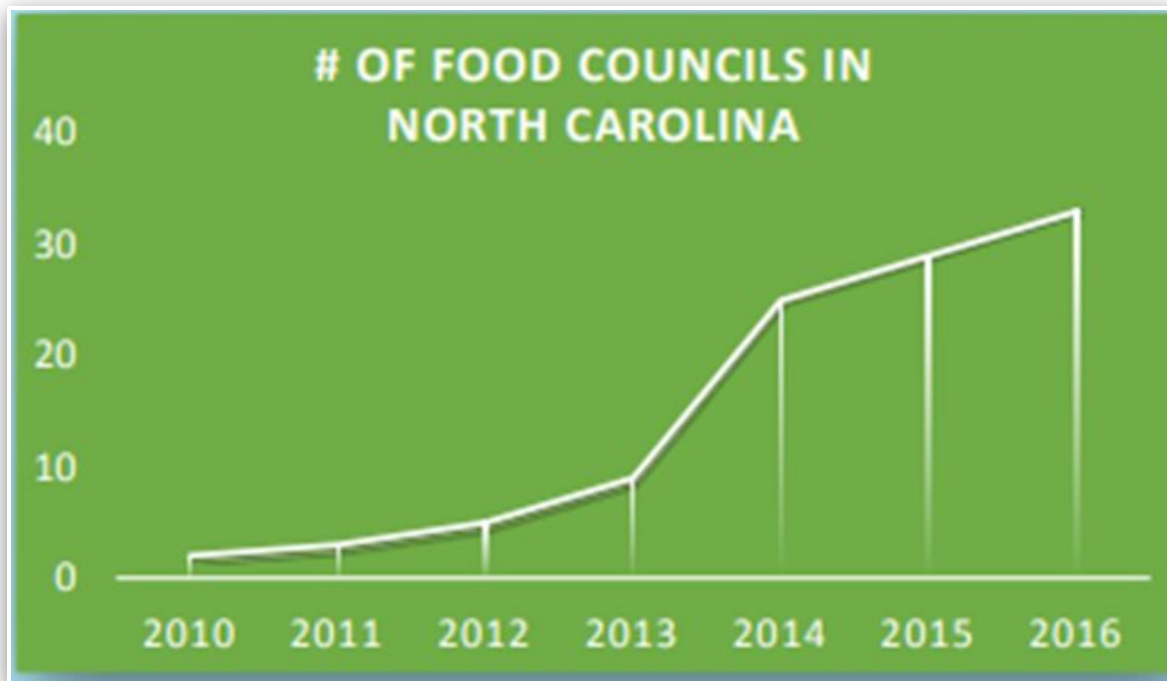
- Shared language
- Tools
- Trainings



Our History... How we got here

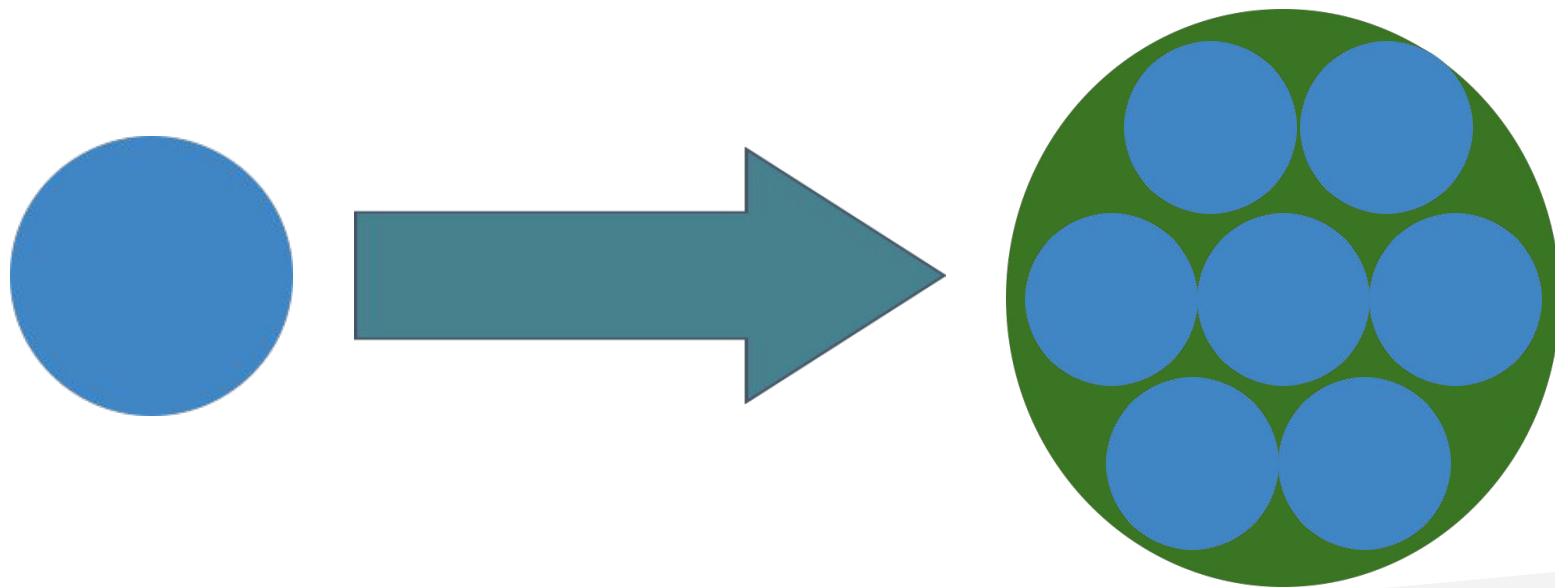


Growth of the network



Now, at 33 food councils in 2017.

 Key Takeaway: Invest in Relationships

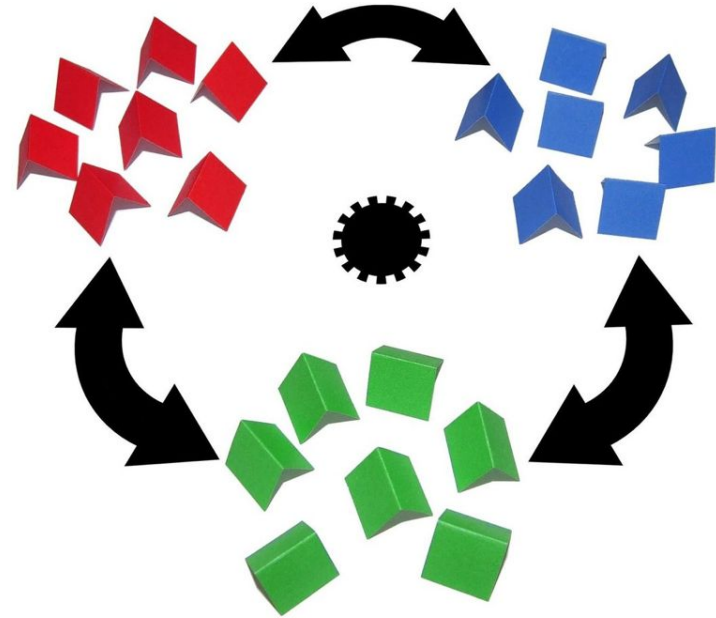


Relationships = GREATER IMPACT

Key Takeaway: Develop Process

Lesson Learned: we need processes in place for a multi-organization & multi-sectoral initiative to work successfully

- Communication
- Efficiency
- Conflicts
- Impact



Four ways that we work together

- Organizational Processes
 - Partner Org Check-Ins
 - Partner Agreement
 - Partner Key Messages
- Our Team Processes
 - Communication
 - A Team Approach
 - Our Culture





Organizational Processes- Making it Work

Partner Organization Check-ins

One-on-one Check-ins

- Acknowledge organizational priorities
- Mutually beneficial
- Specific area expertise

All-partner meeting

- Information sharing
- Strategic planning
- Relationship building



Organizational Processes- Making It Work

Partner Agreement: Roles and Commitment to Each Other

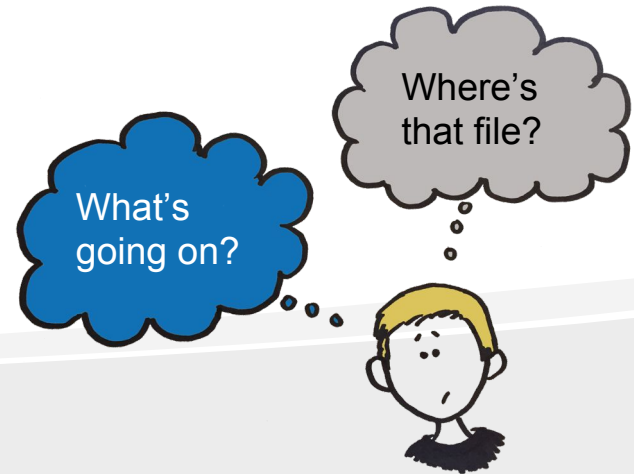
Partner Key Messages - tool for how they be advocates/champions for the work

A Kick Ass Team!



Communication is Vital!

- Circle Forward-collaborative governance model/tool
 - Virtual logistics calls & circle calls
- In person retreats
- Internal documents
 - Google Drive



A Team Approach

Clear roles

Shared leadership

Trust and Accountability





Our Culture

- Intentional focus on our values
- We have fun!
- We believe in our vision!
- We need each other!



Benefits of a Multi-Organizational Team

- Multi-sectoral **expertise**
- **Accountability** to the area of expertise
- Brings **credibility** with multiple partners
- Access to a broad array of **resources**
- Varied **funding** avenues
- Added **resiliency**
- Broader **network reach**
- Ultimately- increased **success** and **impact**



A Recap of Resources

- Whole Measures of Community-Based Food Systems
- Network Weaver
- Circle Forward
- Collective Impact
- Racial Equity
- Partner Agreement
- Key Messages

A Time for Q & A

Megan Bolejack

mbolejack@caresharehealth.org

Gini Knight

gini_knight@ncsu.edu

Abbey Piner, Project Director

abbey_piner@ncsu.edu

communityfoodstrategies.org

