

ADOLESCENT HEALTH INITIATIVE



TRANSFORMING HEALTH CENTERS INTO ADOLESCENT- CENTERED MEDICAL HOMES

Ellen Wagner, MPH, MS

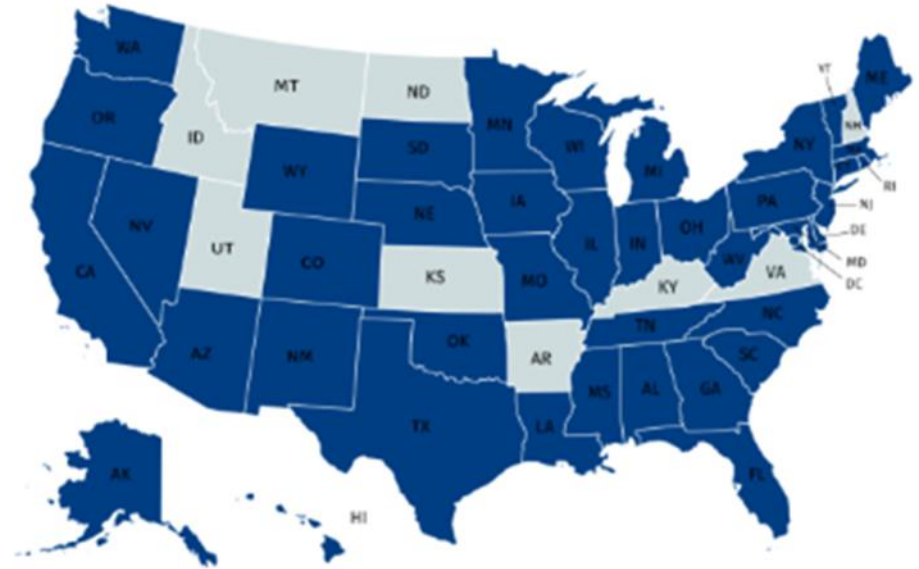
Adolescent Health Initiative, a program of
Michigan Medicine Community Health Services

ADOLESCENT HEALTH INITIATIVE



The Adolescent Health Initiative (AHI) provides training, technical assistance, and coaching to health care providers, health systems, and organizations across the country to improve adolescent-centered care.

Our vision is to transform the health care landscape to optimize adolescent and young adult health and well-being




TEEN ADVISORY COUNCIL



OBJECTIVES



AT THE CONCLUSION OF THIS SESSION , ATTENDEES
WILL...

1. Describe the core components of adolescent-centered care
 2. Identify opportunities to improve delivery of adolescent-centered care in their own practice or organization
 3. Utilize tools and resources to help health care professionals enhance adolescent-centered practices
- 

WHY IS ADOLESCENT-CENTERED CARE IMPORTANT?

Missed opportunities for providing patient-centered care and impacting adolescent patient outcomes.





Being Youth-Friendly

Introduce your team to elements of an adolescent-centered environment and identify key staff and provider behaviors essential to providing youth-friendly care.

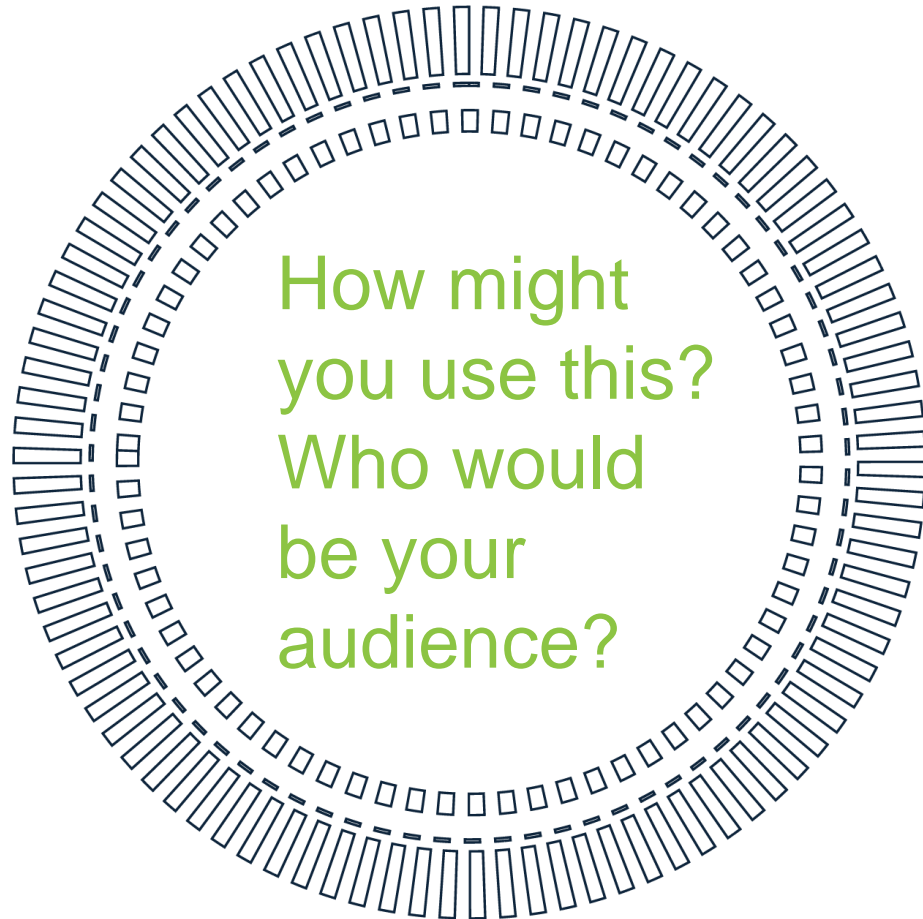
SPARK TRAINING

Being Youth-Friendly





How did it
feel to
participate in
the Spark?



How might
you use this?
Who would
be your
audience?

USING SPARKS TO BUILD PARTNERSHIPS



Share with your team

Offer as a resource
to a local partner

Lead a training for
local partner

Organize a
community summit

Lead at a local
coalition or
community meeting

Other ideas!



ADOLESCENT CENTERED ENVIRONMENT DOMAINS



1. Access to Care
2. Adolescent-Centered Environment
3. Confidentiality
4. Best Practices & Standards of Care
5. Reproductive & Sexual Health
6. Behavioral Health
7. Nutritional Health
8. Cultural Responsiveness
9. Staff Attitude & Respectful Treatment
10. Adolescent Engagement & Empowerment
11. Parent Engagement
12. Community Engagement

PROCESS



Planning (3 months)

ACE-AP Team



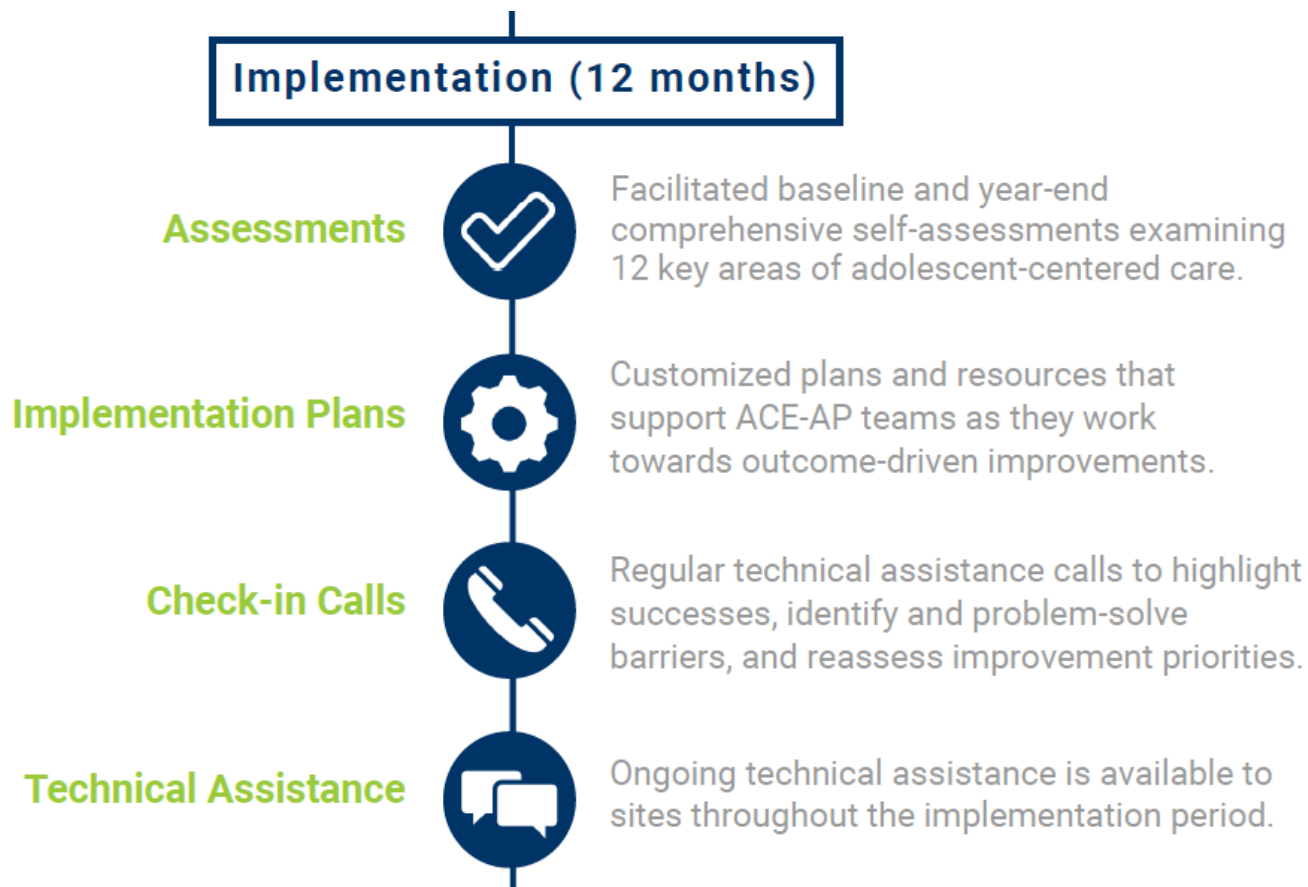
A team including a provider, a health center manager, and committed staff who dedicate 1-3 hours/month to the project.

Data Collection



Staff, providers, and adolescent patients complete surveys. Results help sites identify areas for improvement.

PROCESS



PROCESS



ACE-AP IMPACT

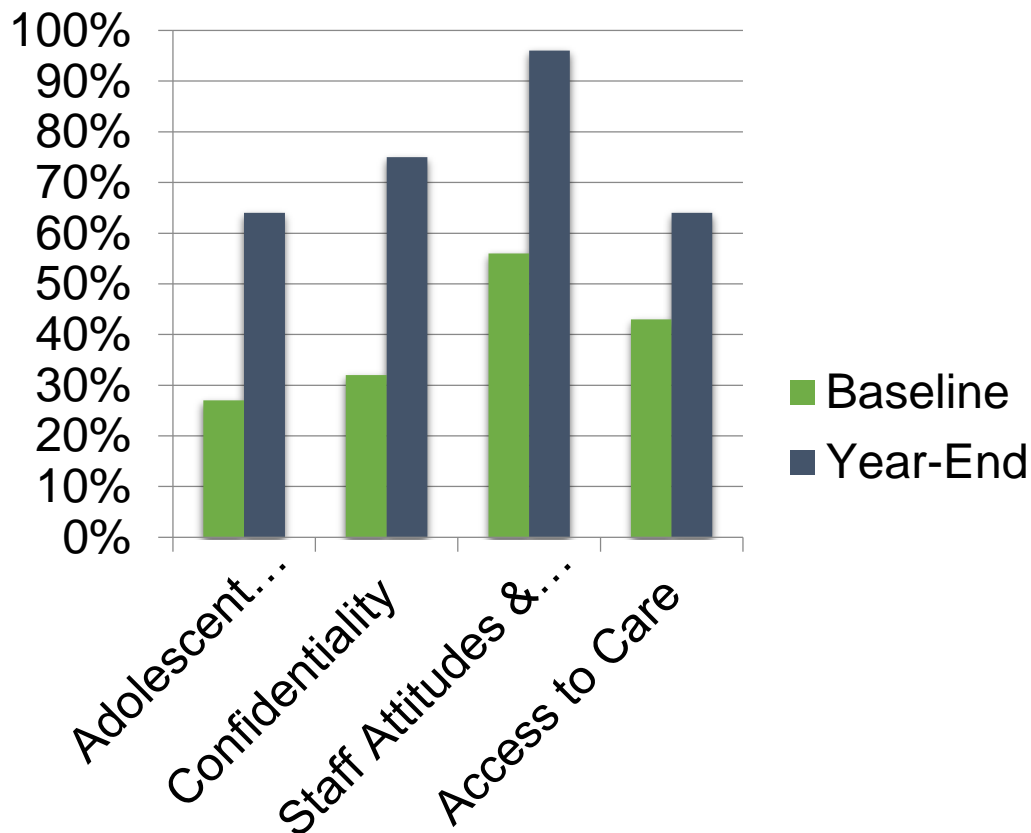


At baseline, participating health centers had implemented **40%** of adolescent-centered indicators on the ACE-AP assessment.

Implementation rates increased to **72%** at year-end.

Areas with the greatest improvement include:

- Adolescent Appropriate Environment
- Confidentiality
- Staff Attitudes & Respectful Treatment
- Access to Care



RECOGNITION



2017 Innovative Program Award

Society of Teachers of Family Medicine



2016 Innovative Approaches to Adolescent Health Care Award

Society of Adolescent Health and Medicine



2015 Outstanding Emerging Innovation Award

Healthy Teen Network



GATHERING YOUTH FEEDBACK: YOUTH-LED ASSESSMENT

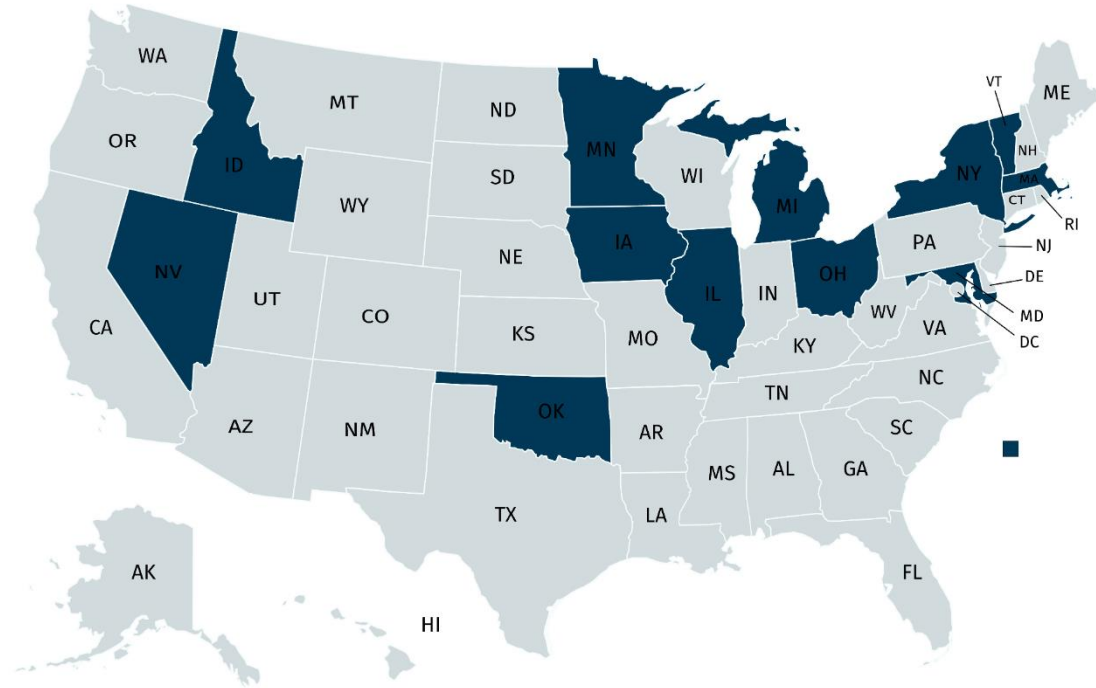


Encourage young people to reflect on what's important to them when accessing health care.

What Matters to You(th)?

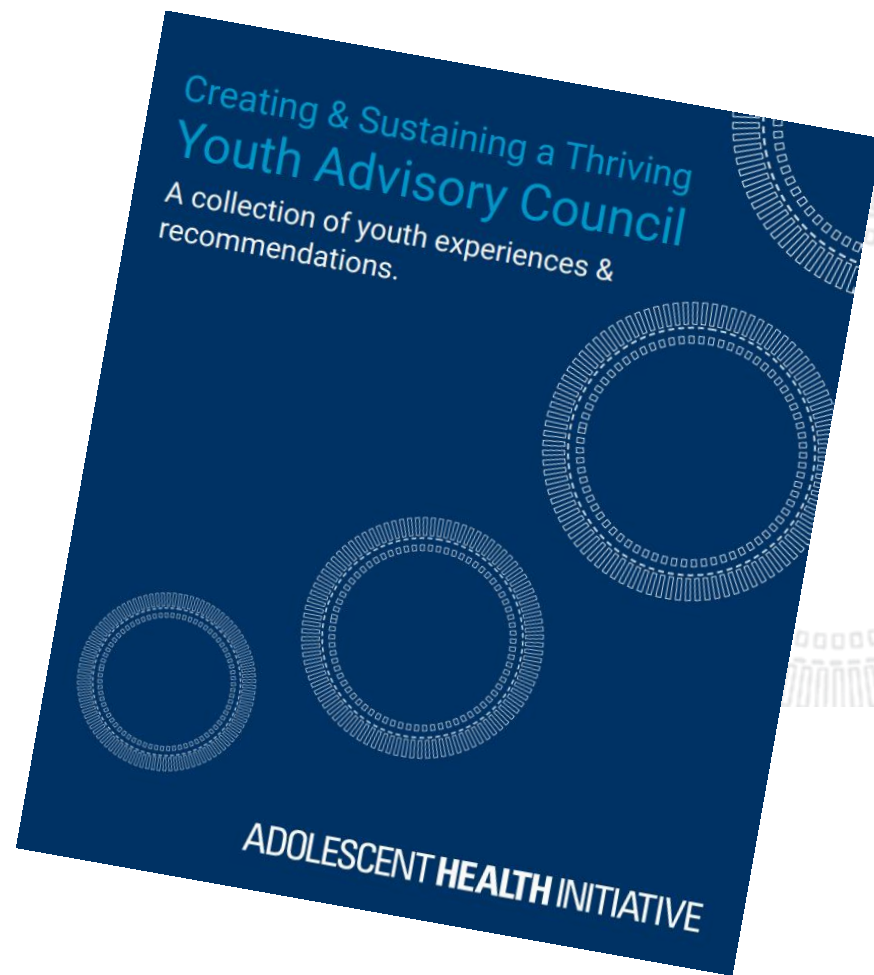
THIS HEALTH CENTER...	No	Partially	Yes
1. Is in a location that young people in the community can easily get to.			
2. Has walk-in or drop-in appointments.			
3. Makes their hours visible (listed on the website, posted on the front door, etc.).			
4. Is open during times that are convenient for young people (after-school, weekend hours, etc.).			
5. Has a physical space that is welcoming to young people (appealing artwork, posters, free WiFi, etc.).			
6. Has a check-in and check-out area that feels private.			
7. Has exam rooms that feel private (soundproof, etc.).			
8. Has confidential services for youth.			
9. Posts information about confidential services in places that youth can easily see.			
10. Has services that are free or low-cost for youth.			
11. Posts information about free or low-cost services in places that youth can easily see.			
12. Posts visual cues (rainbow stickers, pamphlets, etc.) to indicate that LGBTQ+ youth are welcomed.			
13. Has an all-gender bathroom in a convenient location.			
14. Provides services in the languages spoken by youth in your area.			
15. Posts information about the languages staff speak in places youth can easily see.			
16. Has mental health services for youth.			
17. Posts information about mental health services in places that youth can easily see.			
18. Has health education materials (brochures, etc.) that are easy to understand and appealing to youth.			
19. Provides free menstrual products.			
20. Provides free condoms.			
21. Provides multiple birth control methods (pill, patch, LARCs, emergency contraception, etc.).			
22. Provides pregnancy testing and comprehensive options counseling.			
23. Provides testing and treatment for sexually transmitted infections (STIs).			

Youth-led Assessment



Created with mapchart.net ©

YOUTH ADVISORY COUNCIL



WELCOMING ENVIRONMENT



**WE'RE
HERE
FOR
YOU**

As in, you can ask us anything.

Really.

Don't worry if this takes a minute to sink in.

We're not going anywhere.

Take your time.

And if we don't hit the mark, let us know.

ADOLESCENT HEALTH INITIATIVE
Transforming adolescent and young adult health

TAKE CHARGE OF YOUR HEALTH CARE

AGE 11-12

- ✓ Know your health care rights.
- ✓ Learn your personal and family medical histories, including any medications and allergies.
- ✓ Know your medications and take them on schedule.
- ✓ Talk directly with the health care provider at your appointment: Be honest and ask questions.

AGE 13-14

- ✓ Ask to spend time alone with your health care provider during your visit.
- ✓ If available, set up an online portal to view medical information and message your health care provider.
- ✓ Check in for your appointment yourself.

AGE 15-16

- ✓ Make your own appointments.
- ✓ Call your pharmacy to refill your prescriptions.
- ✓ Know how to contact all of your health care providers (doctor, dentist, etc.).
- ✓ Learn about your health insurance and carry your card.
- ✓ If you don't have insurance, ask about your options.

AGE 17-18

- ✓ If you are moving away from home or need to switch to an adult care provider, make a plan for where you will receive health care next.
- ✓ Transfer your medical records to your new health care provider, if applicable.
- ✓ Ask your health care provider what your privacy rights will be when you turn 18.
- ✓ Make sure you will still have health insurance after turning 18. If you won't, talk to your health care provider about options.

ADOLESCENT HEALTH INITIATIVE

© 2017 Regents of the University of Michigan

www.AdolescentHealthInitiative.org

IMPROVING CARE FOR ADOLESCENTS



Resources That Can Help

AHI offers training, consulting, and ready-to-implement strategies to help health centers across the country improve their adolescent-centered care.



Consulting & Technical Assistance



ACE-AP



Adolescent Champion Model



Spark Trainings



Starter Guides



Videos



Webinars & Trainings



Health Center Materials

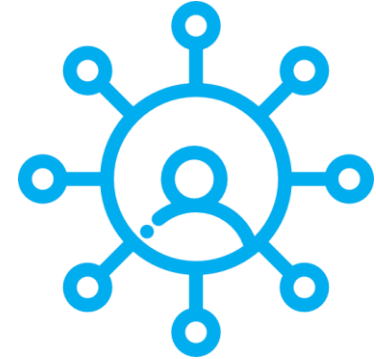
REFLECTION



Think



Pair



Share





What can I do to
improve
adolescent-
centered care?

THANK YOU!



ADOLESCENT **HEALTH** INITIATIVE

CONNECT WITH US



Adolescent_Hlth



adolescent_health



Adolescent Health Initiative

adolescenthealth@umich.edu

www.AdolescentHealthInitiative.org